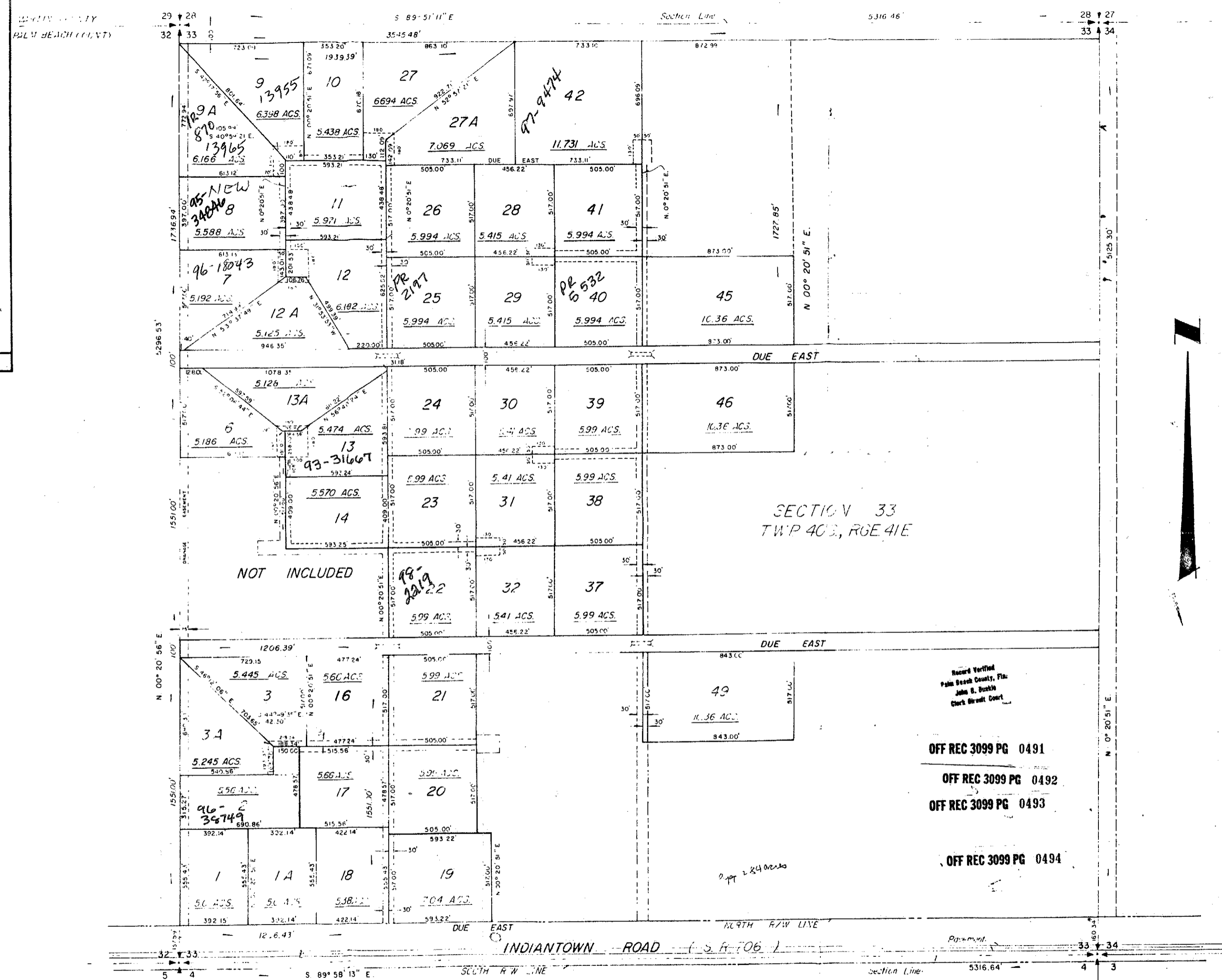


VICINITY MAP

Note:

For dimensions of the Not Included Areas see ORB 2462 Page 940-946 original approval.

AN AFFIDAVIT OF EXEMPTION FOR THE SUBDIVISION OF A PORTION OF SECTION 33, TOWNSHIP 40 SOUTH, RANGE 41 EAST, PALM BEACH COUNTY, FLORIDA.



OFF REC 3099 PG 0491

OFF REC 3099 PG 0492

OFF REC 3099 PG 0493

OFF REC 3099 PG 0494

NOTE: 1 acreage figures include Easements

JUN 21 1979

STATE OF FLORIDA  
 JUN 1 1979  
 I, *Okayne*  
 Surveyor  
 do hereby certify that the above is a true and correct copy of the original as filed in my office.

CYPRESS TRAILS

DATE	APPROVED	DATE	BY	DESCRIPTION

FIELD NO.  
 DRAWN BY  
 CHECKED BY  
 FILE NO.  
 DATE

Lindahl, & Browning, Inc.  
 P.O. Box 277, Jupiter, Florida 33458  
 JUN 21 1979

ur0281.igr  
 CYPRESS TRAILS 33/40/41